

CLIMATE DECLARATION

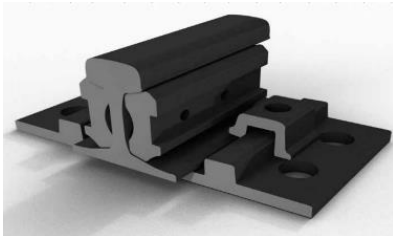
FOR RAILWAY Steel
Declared unit: 1 tonne of Railway Steel

The climate declaration shows the emissions of greenhouse gases, expressed as CO₂-equivalents. It is based on verified results from a life cycle assessment (LCA) performed as basis for an EPD®, in accordance with ISO 14025.

Information about the product

OZKAN uses direct melting of scrap to produce railway steel. Alloying elements are added in the form of ferroalloys or metals. The production process route is Electric arc furnace -> Ladle furnace -> Vacuum de gassing -> Continuous casting -> Hot rolling. Hot rolled railways steel are being produced in various shapes such as Check Rails, Crane Rails and Railway Accessories. Railway's steel is used for various applications. For example:

- Railway application (crossing, base plates, clips, fish plates.)
- Crane rails (ports, terminals, retractable roofs.)



Information about the company

Özkan Steel was founded in 1953 and has its headquarter and production sites in İzmir-Aliağa over an area of 460,000 m². Özkan Steel, having a melting capacity of 1,000,000 tons and rolling capacity of 700,000 tons per year, has been active in producing special steel profiles for the Shipbuilding, Offshore, Onshore, Automotive, Mining and Tunneling, Railways, Agriculture, Earth Moving, Material Handling, Machinery, Energy and Commercial Construction sectors. Özkan Steel has been using its over 60 years of experience in hot rolling of special profiles to increase its product portfolio continuously. This accumulated experience grants Özkan Steel the ability to be one of the leading steel companies in the production of special steel grades and special steel profiles throughout the world.

Climate Declaration

The table below shows the emissions of greenhouse gases, calculated as carbon dioxide equivalents (kg CO₂ eq.) for 1 tonne of bearing steel. The included life cycle stages are upstream (A1-A2), core process (A3), downstream (A4/C1-C4) and benefits and loads (D).

Upstream (A1-A2)	Core (A3)	Downstream (A4, C1-C4)	Other (D)
359 kg CO ₂ eq.	640 kg CO ₂ eq.	256 kg CO ₂ eq.	-632 kg CO ₂ eq.

Other environmental information

This declaration is limited to the impact on climate change by emissions of greenhouse gases. Further information about other relevant environmental aspects is available in the EPD® at [www.virondec.com](http://www.environdec.com) and www.epdturkey.org.

Contact information

Bozköy Mahallesi 13. Cadde No:4
35800 Aliağa - İzmir / TURKEY

(+90) 232 625 15 15

www.ozkansteel.com

info@ozkansteel.com



EPD PROGRAMME: THE INTERNATIONAL EPD® SYSTEM		REGISTRATION NO: S-P-04098	VALIDITY: 2026-09-15
PCR: PCR 2014:10 Fabricated steel products, except construction products, machinery and equipment	UN CPC: 412	PCR REVIEW CONDUCTED BY: THE TECHNICAL COMMITTEE OF THE INTERNATIONAL EPD® SYSTEM	
INDEPENDENT VERIFICATION OF THE DECLARATION AND DATA, ACCORDING TO ISO 14025: doc. Ing. Prof. Vladimír Kočí, INDIVIDUAL VERIFIER		APPROVED BY: THE INTERNATIONAL EPD® SYSTEM	
LINK TO MORE INFORMATION: https://www.virondec.com/library/epd4098			
CLIMATE DECLARATIONS FROM DIFFERENT PROGRAMS MAY NOT BE COMPARABLE			